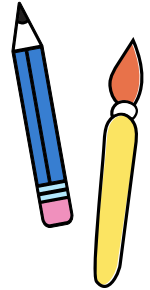


# ALL ABOUT TESTING



***CMIT SOUTH UPCOMING TESTS...***



This will serve as a guide to help you know what students are testing and when.

## **ACCUPLACER**

11th & 12th who have at least a 2.5 cumulative GPA are eligible to take the Accuplacer test to qualify for Dual Enrollment courses.

Letter have be sent out to those who qualify along with a sign up sheet. Please check your CMIT South email accounts for notification.

**Testing will begin on Monday, October 3rd-6th.**

## **NWEA MAP**

Grades 6-8 will take this diagnostic test for Math & RELA October 12th & 14th 1st & 2nd periods.

MAP Growth helps teachers check student performance by measuring achievement and growth. MAP Growth tests are unique, and it adapts to your child's responses to measure your child's skill level. If your child answers a question correctly, the next question is more challenging. If they answer incorrectly, the next one is easier. These results will provide a more complete picture of what your child knows and is ready to learn—whether it is on, above, or below their grade level.

