

TAKE  
**10**  
MINUTES

# STRONG SCHOOLS MARYLAND

MONTHLY AGENDA ITEM FOR MEETINGS

Welcome to a coordinated group of thousands of Maryland residents invested in improving education in our state. Strong Schools Maryland is a non-profit, non-partisan, campaign organizing to fully implement and fund the Kirwan Legislation (Blueprint for Maryland's Future) to make Maryland schools world-class. Use this guide to provide a quick update on recent developments on the Blueprint and lead an easy action for your group members in 10 minutes or less of your meeting agenda. For more in-depth information, visit [strongschoolsmaryland.org](http://strongschoolsmaryland.org)

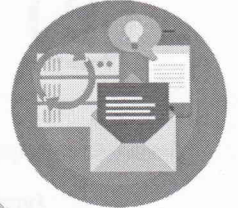


## QUICK UPDATE

Maryland schools have fallen to 26th in national rankings and fewer than 40% of our graduates can pass an Algebra 1 and/or a 10th grade English PARCC.

Fortunately, the state has formed a commission chaired by Brit Kirwan to study the current needs of students in Maryland and analyzed how to meet them with best practices from all over the world. The Kirwan Commission released their report of recommendations and, the Maryland General Assembly kickstarted most of them in the Blueprint bill approved during the 2019 legislative session. The recommendations help eliminate achievement gaps as well as boost performance for all students by increasing funding for English language learners, improving college and career readiness pathways, providing more resources for schools with concentrated poverty, ensuring high quality and diverse teachers and leaders, as well as expanding early childhood education. A summary of each policy initiative can be found at [strongschoolsmaryland.org](http://strongschoolsmaryland.org).

School districts across the state received \$255 million new dollars to fund these initiatives. Now that we have initial funding, we must ensure the full recommendations are implemented and funded in order to transform our prek-12 system.



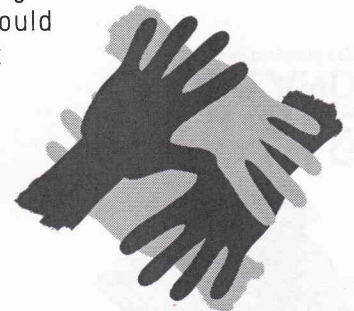
## EASY ACTION

Demand that our legislators fully fund and implement the Kirwan policy by sending brief, direct, and friendly e-mail to our agenda setters in the Maryland General Assembly House and Senate. Ask Prince George's County State Senators Melony Griffith and Douglas Peters to make fully funding the Kirwan Commission policy initiatives top priority for the 2020 legislative session. Include compelling reasoning for this ask including a personal story or statistic you learned today. Your email could be as simple as saying "Please make Kirwan your #1 issue" with a subject line that says "Put Education First"



**Melony Griffith** - State Senator, District 25  
Email - [melony.griffith@senate.state.md.us](mailto:melony.griffith@senate.state.md.us)

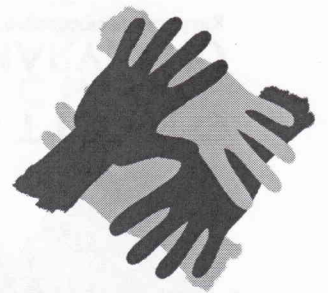
**Douglas Peters** - State Senator, District 23  
Email - [douglas.peters@senate.state.md.us](mailto:douglas.peters@senate.state.md.us)



If you know your delegates and senator, email them too!  
Want to get more involved? E-mail [linsey@strongschoolsmaryland.org](mailto:linsey@strongschoolsmaryland.org)

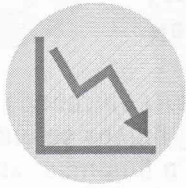
**STRONG  
SCHOOLS  
MARYLAND**  
[strongschoolsmaryland.org](http://strongschoolsmaryland.org)

# STRONG SCHOOLS MARYLAND



**STRONG  
SCHOOLS  
MARYLAND**  
strongschoolsmaryland.org

## CREATING A WORLD-CLASS EDUCATION IN MD



Maryland schools have *fallen to 26th* in national rankings and *fewer than 40%* of our graduates can pass an Algebra 1 and/or a 10th grade English PARCC required to meet college and career readiness standards.

### WHAT HAPPENED?

The last time the state analyzed student needs and funding for schools was in 2002. Now our schools are underfunded by \$2.9 billion annually. Underfunding disproportionately affects Maryland students with 53% of Black students attending underfunded schools compared to 8% of White students.



### HOW DO WE FIX IT?

Maryland formed a commission chaired by Brit Kirwan to analyze student needs and how to meet them with best practices from all over the world. The Kirwan Commission released their report of recommendations, and the Maryland General Assembly kickstarted most of them in the Blueprint bill approved during the 2019 legislative session. The recommendations help eliminate achievement gaps as well as boost performance for all students.



### HOW YOU CAN HELP

School districts across the state received \$255 million new dollars this year to fund these initiatives. Now that we have a down payment, we must ensure the full recommendations are funded in order to transform our pre-k-12 system.

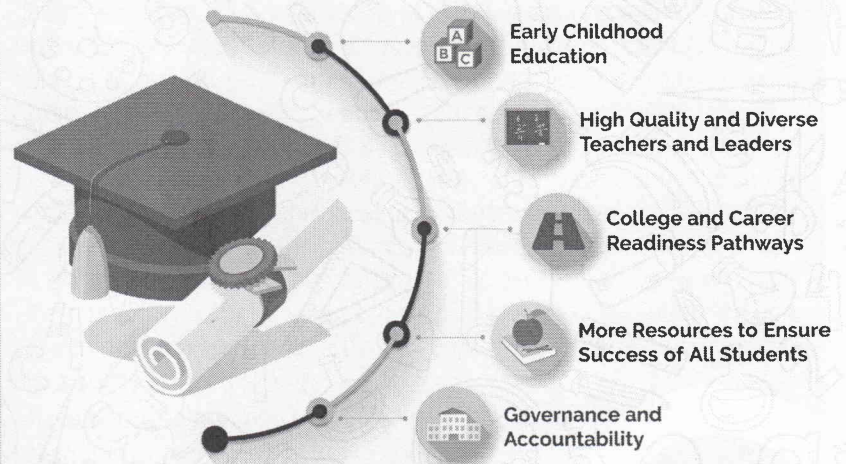
Help us get this done in the 2020 legislative session by joining Strong Schools Maryland. We are a non-profit, non-partisan, campaign organizing to fully implement and fund the Kirwan Legislation (Blueprint for Maryland's Future) to make Maryland schools world-class.

There are 3 easy ways to get involved. Find one that fits your schedule and capacity to start fighting for our children's future today.

Go to [strongschoolsmaryland.org](http://strongschoolsmaryland.org) to sign up.



### Kirwan Commission Policy Initiatives



A summary of each policy initiative can be found at [strongschoolsmaryland.org](http://strongschoolsmaryland.org).

## 3 EASY WAYS TO GET INVOLVED

1

### LEARN

Sign up for the Strong Schools Maryland email list. Read our monthly emails to learn about updates on the Blueprint and take the action. Become an Action Leader by sharing with your network.

2

### ACT

Take 10 minutes out of a group meeting that you already attend to share the monthly Strong Schools Maryland update on the Blueprint and take an action. Sign up to be a Take 10 Leader if this option sounds right for you. Don't have a group? Start a Team of 10. Gather 10 people and meet monthly to learn about and take action toward our goal of passing Kirwan. Sign up to be a Team of 10 leader if this sounds like a better fit.

3

### CONTRIBUTE

We rely on committed individuals to help continue to spread our message. Making a secure donation on our website is an effective way to contribute to the Strong Schools Maryland effort.

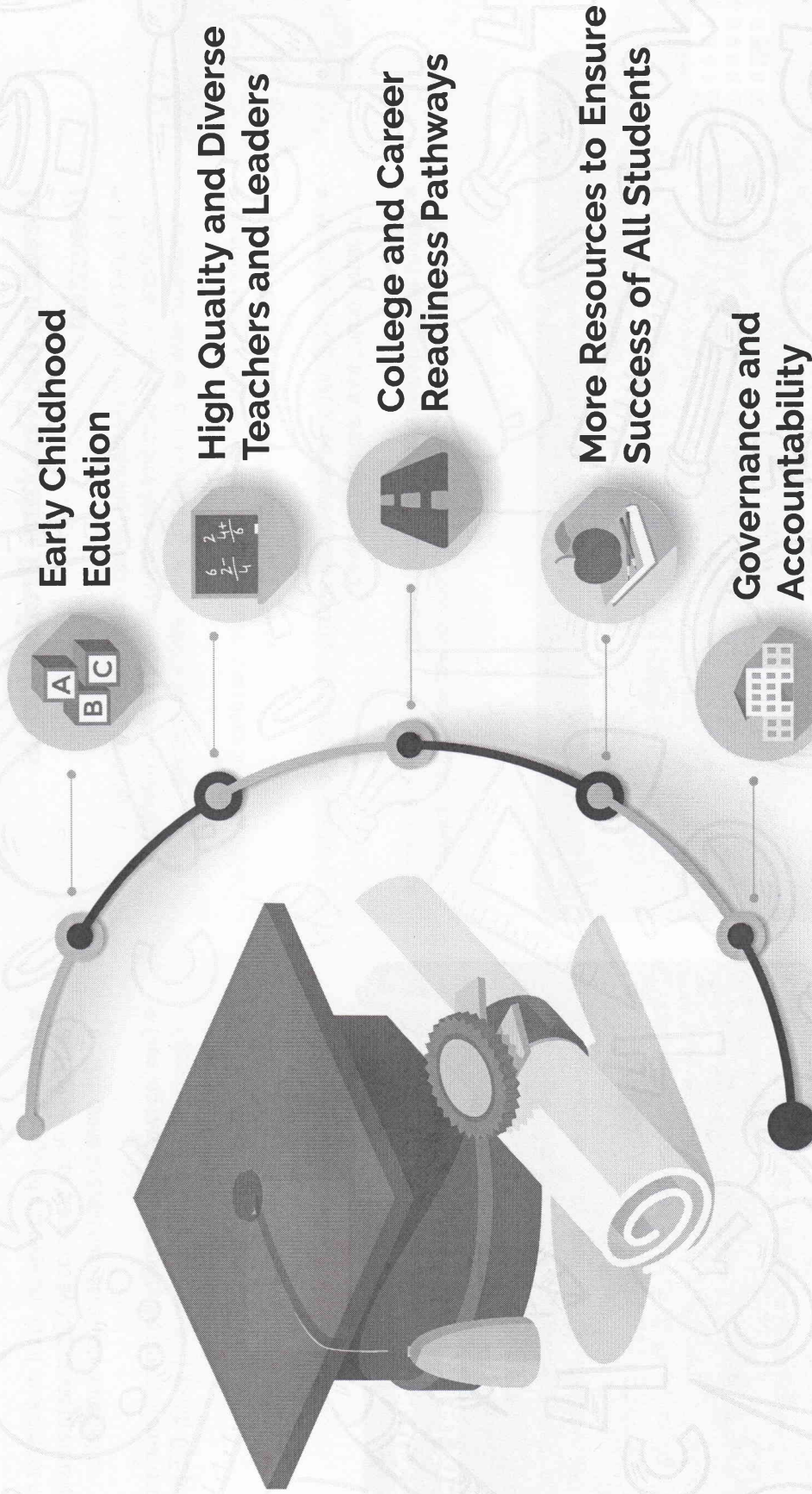
Sign up at [strongschoolsmaryland.org](http://strongschoolsmaryland.org) or email [linsey@strongschoolsmaryland.org](mailto:linsey@strongschoolsmaryland.org)



**STRONG  
SCHOOLS  
MARYLAND**  
strongschoolsmaryland.org

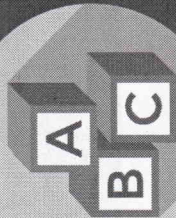
The Kirwan Commission has issued an interim report with final policy proposals that offers a bold vision for Maryland's system of public education. This provides a synopsis of the report. The final piece of information to be delivered in the fall is the final school funding formula with state and local contribution recommendations.

## Kirwan Commission Policy Initiatives



## Early Childhood Education is Critical

- Expand the network of Maryland Family Support Centers and Judy Centers for all low-income children and families that need them
- Staff capacity building for all new and current early learning programs
- Provide high quality Pre-Kindergarten for 4-year olds, low income 3 year olds and all children with disabilities



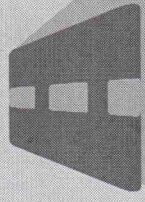
## Elevating the Teaching Profession is Essential

- Elevate the status of the teaching profession by improving working conditions, allowing more time for collaboration and strategic planning, comparable salaries, & implementing career ladders for teachers
- Improve teacher quality by making teacher preparation programs with higher standards and a variety of classroom experiences
- Incentivize collaboration between school systems and colleges of education to better recruit, train, and retain teachers
- Recruit a more diverse workforce through strategic recruitment and retention efforts including strengthening teacher induction and new teacher support

$$6 \frac{2}{4} - 2 \frac{4}{6}$$

## Greater Accountability is Necessary for Success

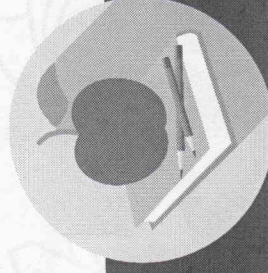
- Establish an Independent Oversight Board with authority to develop a comprehensive plan for implementation and the ability to hold state and local agencies accountable for carrying out assigned roles.
- Track and report on progress of students as a whole and within subgroups as well as track and report on progress on program implementation and success.



## Students Must Leave High School Better Prepared for College and Careers

Modify Maryland College and Career Ready standards to emulate global standards by:

- Giving high school students, after 10th grade, the chance to earn an Associate's degree and finish high school ready to go to work with an industry-certified credential or to start the last two years of college
- Providing targeted interventions to all students not meeting College and Career Ready standards by 10th grade to ensure they are on track by 12th grade to avoid post-secondary remediation
- Creating two groups to modify the current Career and Technical Education (CTE) offerings to ensure: 1) quality CTE program design; 2) ongoing CTE program implementation



## More Resources Must be Provided for At-risk Students

- Increase per pupil funding with additional resources for specified categories of student need; students who live in poverty; students who are limited English proficient; and students with a disability
- Increase wraparound services for at-risk students and their families including resources for a service coordinator and additional physical or mental health practitioners
- Identify students not on track for college and career readiness and provide more intensive support beginning in grades k-3.

**To view the full report, please visit:**  
[www.strongschoolsmaryland.org](http://www.strongschoolsmaryland.org)