

# Graduation Requirements

It's about to get real.

# Who do you need to know?

- Principal: Ms. Asafa
- Assistant Principal: Mr. Taner
- Front Office Staff: Ms. Washington, Ms. Fowlkes, Ms. Wallace
- School Counselor: Ms. Amos (hey, that's me!)

# **GRADUATION REQUIREMENTS**

***Must have a total of 21 credits***

- **English: 4 credits**
- **Mathematics: 3 credits, 4 Years of High School Math (Algebra 1 → Geometry → Algebra 2 → fourth course and more)**
- **Social Studies: 3 credits (US History, Government, and World History)**
- **Science: 3 credits (must include Biology)**
- **Fine Arts: 1 credit**
- **Technology Credit: (FOT or INT1010 for ITEC): 1 credit**
- **Personal Fitness: ½ credit**
- **Health: ½ credit**
- **Electives: Minimum of 3 credits**

# GRADUATION REQUIREMENTS

## continued...

- **2 years of the SAME foreign language unless..**
  - Effective, starting with the Class of 2021, you took a level one language course in high school other than Spanish (French 1, Italian 1, etc) and have not yet completed the second level (French 2, Italian 2, etc), you will need to take Spanish 1 at CMIT-South to fulfill this requirement.
- **A minimum of 4 credits earned in your senior year**
  - At CMIT South, juniors and seniors are given full schedules and can drop courses based only on their job/internship and Dual Enrollment schedules
    - You are only eligible for this if you have completed all required courses with the exception those required during your senior year
- **A total of 21 credits are required for Graduation**
- **A total of 24 service hours are also required.**



# **PROMOTIONAL REQUIREMENTS**

- **Grade 9 to Grade 10**

- Must have 5 credits by end of year
  - Must include 1 English

- **Grade 10 to Grade 11**

- Must have 10 credits by end of year
  - Must include: 2 English, 1 Mathematics, 1 Science, and 1 Social Studies

- **Grade 11 to Grade 12**

- **Must have 14 credits by end of year**
  - Must include: 3 English, 2 Mathematics, 1 Science, 1 Social Studies
  - AND be able to fulfill all graduation requirements within a full Senior Year Schedule

# SERVICE LEARNING

- You MUST complete **24 Student Service Learning Hours** in order to graduate.
- All SSL must be done with **nonprofit and/or tax exempt** organizations - you cannot get service hours for paid work or for volunteer work done at a for-profit business
- All hours have to be completed **outside of your scheduled school hours**

**\*\*Forms can be found at Ms. Amos' office and on the CMIT-South site\*\***

# SchoolMax

- **Family Access Portal allows you and your parents to log in from any computer with an Internet connection and view student information**
  - Students can view assignment scores as teachers post them each week
  - Students can also see their attendance records
- **If you have issues logging in, please email Mr. Bayram at [mbayram@cmitsouth.org](mailto:mbayram@cmitsouth.org)**
- **Parents can also create their own account by registering through the PGCPS website under the PARENT tab**
- **Important: Now that you are in high school, it is YOUR responsibility to know what your grades are - it is not just on your parents to know how you are doing**
  - **\*\*If you fail a class, you will repeat it - it is very possible to stay back a grade, you don't get to just do make-up work and move on to the next grade level\*\***

# CMIT-South Email

- **Every student has a CMIT-South email account. This is one of the main ways you will communicate with your teachers.**
- **I send you important information via email**
  - **Please check and read your email .... You miss out on crucial information regarding programs**
  - **For example: Did you fill out the student survey I sent you...?**



# **SCHOOL COUNSELING** **DEPARTMENT FUNCTIONS**

- **Counseling students in academic, college and career readiness, personal and socioemotional**
- **Keeper of your transcripts**
  - **Transcript Request forms can be found outside of Ms. Amos' office and on the CMIT-South Website under the "Students" tab**
- **Making sure that students meet their graduation requirements**
- **Schedule Parent Teacher Conferences with all stakeholders regarding endangerment of failing (parents, students, admin, teachers, etc.)**
- **Ensuring that college application materials are ready to go! (You will use NAVIANCE and CommonApp to apply)**

# **SCHOOL COUNSELING DEPARTMENT**

## **FUNCTIONS (continued)**

- **Annual review of records (credit evaluations)**
- **Classroom activities (orientations and other lessons)**
- **Special programs (College Trips, Information Sessions, etc.)**

# **TIPS FOR CLASSROOM** **SUCCESS**

- **Get to know your teachers...they're people too**
- **Be interested in learning or at least find something interesting in what you learn**
- **Take good notes and study for tests and quizzes**
- **Turn your assignments in on time - CMIT has a no late work policy**
- **Ask questions when you do not understand something**
- **Check SchoolMax regularly**

# **WHAT TO DO IF YOU** **NEED HELP**

- **Evaluate your own performance and identify your strengths and weaknesses**
- **Seek assistance from your teacher and schedule more study time**
- **Take advantage of extra help offered by CMIT- South**
- **Get a study partner that excels in the class**
- **Be responsible for your own success**
- **Consider getting a tutor**
- **Meet with your School Counselor**

# TYPES OF COLLEGES

- **Two-Year Colleges (i.e. Prince George's Community College)**
- **Four Year Colleges and Universities (i.e. Loyola, Towson, University of Maryland)**
- **Military Academies (i.e. Air Force Academy)**
- **Trade Schools (IIT Tech, Cosmetology School)**

# PREPARING FOR COLLEGE

- **What are colleges looking for? What do they see?**
  - Good grades in challenging courses
  - Student involvement in activities/work
  - Teacher/Counselor recommendations
  - SAT/ACT scores
  
- **What type of career are you looking for? What are you interested in? What are you good at?**
  - Do activities related to your career field of interest
  - Take career assessments! (Remember those Naviance emails..?)

# COLLEGE PREPARATION

- **Take advanced level courses that will prepare you for college (i.e. Honors, AP and Dual Enrollment)**
- **Go online and check admission requirements for colleges you are interested in (online application, application fees, essays, recommendations, testing and transcript requirements)**
- **10th and 11th grade Students can take the Accuplacer exam at PGCC for Dual Enrollment:** Determines part of eligibility for Dual Enrollment Courses
- **Become involved in school and community extracurricular activities - less is more if you have leadership experiences**
- **Visit Ms. Amos and read the CMIT Newsletter**
- **Explore volunteer and summer opportunities**

# USEFUL RESOURCES

## ● NAVIANCE

- Did you login yet? (Check your email for your login information)
- Will use this to complete college applications

## ● College Greenlight

- College Search / Scattergrams
- Scholarship Search

## ● Raise.Me

- Micro-scholarships



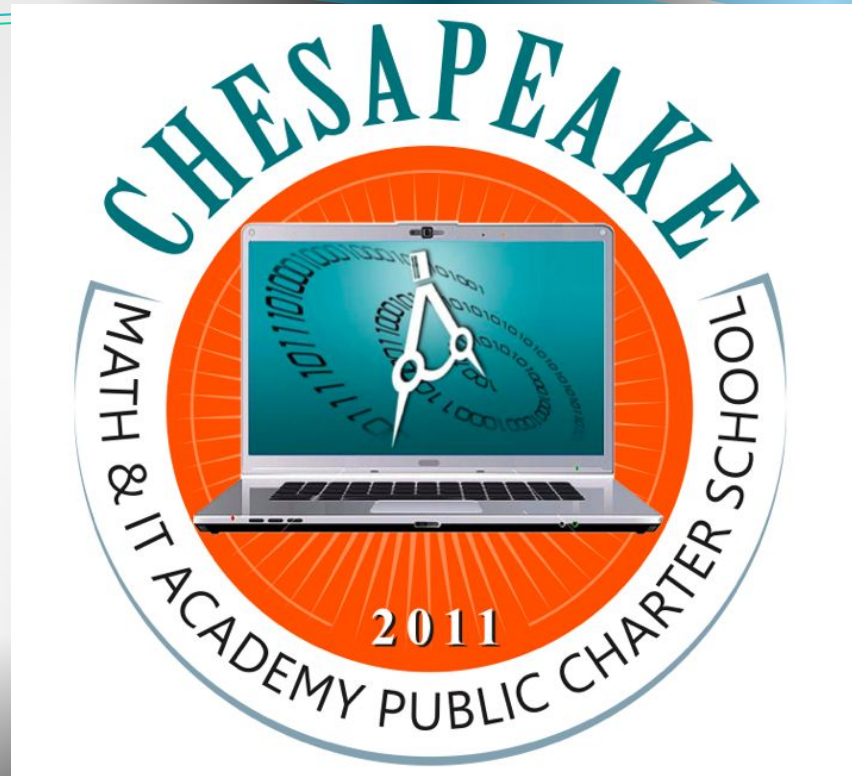
# PSAT/SAT/ACT Tests

- **Tests for scholarship and college entrance usually measure:**
  - Critical reading skills
  - Math problem-solving skills
  - Writing skills
- **Students in 9<sup>th</sup>, 10<sup>th</sup> & 11<sup>th</sup> can take the PSAT**
  - 10<sup>th</sup> and 11<sup>th</sup> Grade students will take the PSAT/NMSQT at CMIT-South (PSAT National Merit Scholarship Qualifying Test): October 10, 2018
    - “Of the roughly 1.5 million high school juniors who take the test, about **50,000 students with the highest total PSAT/NMSQT scores qualify for recognition in the National Merit Scholarship Program**” (Prep Scholar, 2015).
- **Students in 11<sup>th</sup> and 12<sup>th</sup> grade register online at collegeboard.com to take the SAT (you will do this on your own)**
- **Students in 11<sup>th</sup> and 12<sup>th</sup> grade register online at actstudent.org to take the ACT (you will do this on your own)**

# **CAN YOU ANSWER THESE** **QUESTIONS?**

- **How many credits do you need to graduate?**
- **How many credits and which class(es) do you need for promotion to 10<sup>th</sup> grade? 11<sup>th</sup> grade? 12<sup>th</sup> grade?**
- **How many Student Service Hours do you need to graduate?**
- **What do colleges look for in a prospective student?**
- **What does Ms. Amos help you with?**

**Questions?**




**2018 - 2019**


**Student Orientation**

# WELCOME TO CMIT SOUTH


## Administration

- Ms. Asafa - Principal
  - Mr. Taner - Assistant Principal HS
  - Ms. Amos- School Counselor HS
  - Mrs. Bates- Student Support HS
  - Mr. Brown-Student Support HS
- 

# Classroom Expectations

- Respect yourself, others, and property
  - Food, drink, and gum must be kept in locker
  - Electronic devices must be turned off and toys must stay in lockers
  - Be prepared and on time with a positive attitude
  - Raise your hand and wait to be acknowledged
  - Remain seated during class
  - Follow CMIT South uniform policy
- 

# Hallway Expectations

- Walk quietly and report directly to your destination
  - Hall passes must be visible at all times
  - You must sign out using the electronic tablet located in the classrooms
  - Be respectful of self and others
  - Electronic devices must be turned off and toys must stay in lockers
  - Follow CMIT South uniform policy (non uniform jackets may not be worn)
  - Do not eat or drink in the halls
- 

# Hallway

You will have **3** minutes to get to class.

Violations of Hallway decorum will result in disciplinary consequences.

Hallway decorum violations include, but are not limited to, .....

- running
- Loitering
- yelling
- inappropriate touching
- throwing
- eating/drinking
- using lockers without permission






# Locker Rules

- Use locker assigned to you
- Do not help others store belongings
- Do not share lockers
- Keep lockers clean and uncluttered
- Use the lock attached to the locker all the time
- Do not share your locker combo with others

# Cafeteria Rules

- Respect yourself, others, and property
  - No Standing or congregating around tables or walkways. Find a seat and stay seated
  - Eat more, talk less, and keep noise level low
  - Clean up after yourself when finished
  - Electronic devices must be turned off and toys must stay in lockers
  - Report immediately to your next period class
- 

# UNIFORMS

UNTUCKED SHIRT

PLAIN BLACK

SWEAT PANTS

BLACK BELT FOR PE

BLACK SHOES

# UNIFORM POLICY - SHIRTS

## Daily Wear

- Kelly Green Polo
- Blue Polo
- CMIT South Emblem

## Gym Wear

- Green T-Shirt
- CMIT South Emblem



# UNIFORM POLICY - BOTTOMS

## Everyday Bottoms

- Shorts/Pant Khaki
- Skorts/Skirts
- Tan or navy blue in color
- No pockets
- No jean materials
- Knee length skirts



## Gym Bottoms

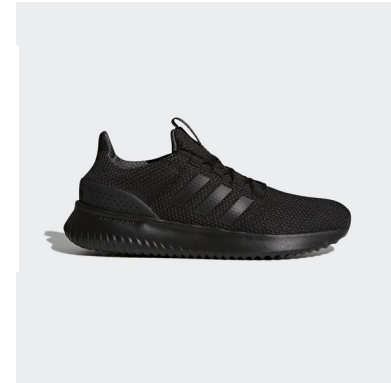
- Sweatpant
- Solid Black color
- No piping/logo



# UNIFORM POLICY - SHOES

## Non PE School Days

- Closed-toed shoes
- Athletic shoes
- Solid black in color



## PE School Days

- Closed-toed shoes
- Athletic shoes
- No color specified
- Socks are white, black and polo shirt colors.



# Jewelry and Purses

## Ear rings

- no larger than the size of a quarter or 1 inch in length ·

## Necklaces

- no more than 16 inches in length
- No more than 3 necklaces, 3 bracelets, 3 rings, etc. may be worn at a time.
- None of the said items may pose a safety hazard, cause a distraction, or represent weapons, contraband, racism, bullying, harassment or any other offensive displays.

## Purses/book-bags/lunch bags

- Purses and book bags must remain in lockers at all times. Only during an emergency and with the teachers' permission, will students be allowed to get their purse and return it to the locker when finished.

**Lunch bags must remain in lockers and left in the bin provided after lunch. These items will not be allowed in the classroom.**



# Unacceptable for Dress Down Day & Daily Wear

- Ripped/cut jeans
- Head scarfs/ bandanas
- hooded sweatshirts
- Flip flops/slides





# CELL PHONES & OTHER ELECTRONICS

- Should remain in your locker and must be turned off.
- A cell phone on silent or vibrate mode is NOT a turned off device.
- School phones are available to use with permission from adult
- Computers/Chromebooks are for instructional use only

## Responses to Violation

- First Offense - Confiscated and returned at the end of the day.
- Second Offense - Confiscated and returned only to a parent.
- Third Offense - Student is prohibited from bringing device to school for remainder of the academic year.
- Failure to give device to staff member on request is considered insubordination and is a violation of the Student Rights and Responsibilities Handbook.

# Afternoon Dismissal



- Students will proceed to the lockers right away, retrieve all necessary items and exit to their cars and/or buses.



**Bus Riders**



C

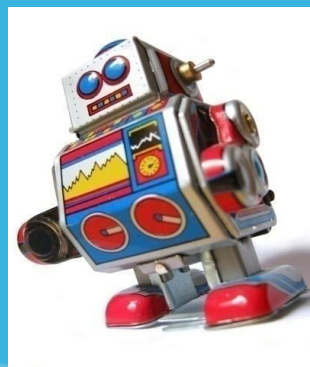
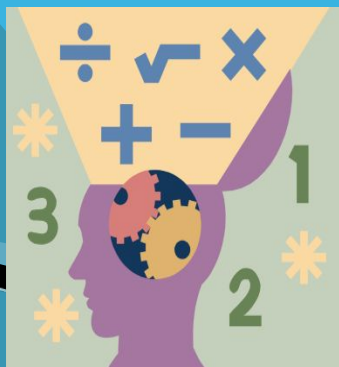
I

u

b

s

- Students attending clubs/enrichment will report to the cafeteria after using lockers upon dismissal.
- Club students will have the opportunity for snacks until 3:15pm
- Enrichment students will get snacks until 3:15pm
- Cell phone and other devices use are not allowed during enrichment or club time.



**DO NOT MAKE YOURSELF A SUSPENSION STATISTIC**  
**Be compliant and follow all expectations.**



# ARE YOU DISRUPTIVE?

**Classroom teachers:** Seat changes, warnings, SIS, detentions, parent contact, parent meeting

**-Intervention room & counseling**

**-Suspension 1-3 days**

**-Suspension 5-10 days**

**-Long term suspension**

**-Request for expulsion**

# ARE YOU “JUST PLAYING AROUND?”

## Physical Attack

Physically pushing, hitting or otherwise attacking another student, staff member or other person lawfully on school property. Any assault that results in serious bodily injury will be considered a Level V offense.



# ARE YOU “JUST JOKING AROUND?”

## Disrespect Towards Others

To willfully intimidate, insult, sexually harass, and/or engage in negative interaction by use of body language, verbally or in writing any member of the school staff, student body and community members.





student  
istic

**SUSPENSION TO  
EXPULSION...**

ing a felony char

student told offic  
t of students he v



kill, according to a report from KSTP-TV (<http://bit.ly/1z1Zoez>).

Authorities say the boy was arrested Tuesday and charged with making terroristic threat as well as a misdemeanor charge of fifth-degree assault.

The school says the boy will not be in class Monday.

The incident remains under investigation.



NEXT ARTICLE IN NE  
Minneapolis shoot





# **STUDENT RIGHTS AND RESPONSIBILITIES**

PRINCE GEORGE'S COUNTY PUBLIC SCHOOLS

BOARD OF EDUCATION

DR. KEVIN MAXWELL, CHIEF EXECUTIVE OFFICER

# LEVELS OF OFFENSES

- Level I-----Classroom Responses*
- Level II-----Administrative Responses*
- Level III-----Short-Term Suspension*
- Level IV-----Long-Term Suspension*
- Level V-----Expulsion*



# Violation of Classroom Rules

## *Level I*

### Minor offenses

- Academic dishonesty
- Classroom disruption
- Teasing or bothering others.
- Disrespect/Insubordination
- Internet/computer misuse
- Dress Code violation
- Tardy to class
- Horseplaying
- Portable Electronic Device use
- Public display of affection

### Disciplinary options

- Verbal warning/correction.
- Warning/name on board
- SIS points
- Teacher-student conference.
- Student-counselor conference.
- Parent conference/shadowing.
- Out of class time-out.
- Detention.
- Administrative intervention.

Serious or repeated *Level I* misbehavior may be treated as *Level II, III, IV or V* infractions.

# LEVEL II

# CONDUCT REQUIRING

# ADMINISTRATIVE INTERVENTION

## **Misconduct**

- Repeated *Level I* Offenses
- Cyber Bullying
- Destruction of Property under \$500
- Disrespect/Insubordination
- Possession of prescription drugs
- Gambling
- Forgery
- Internet/Computer Misuse
- Shakedown
- Theft below \$500
- Trespassing
- Truancy

## **Disciplinary Options**

- Reprimand by Administrator
- Parent Notification
- Loss of Privileges
- Intervention
- In-School Suspension (ISS)
- Detention
- Work Project Assignment
- Restitution
- Referral to Counselor

## *Level III*

### Short-Term Suspension



Offenses that significantly disrupt the educational process, school environment, and/or school related activities.

# SHORT TERM *SUSPENSION*

## 1-5 DAYS

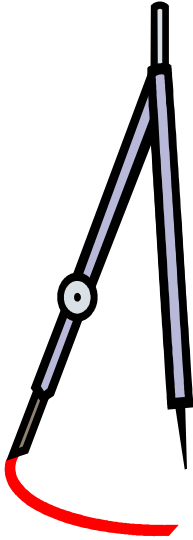
### Misconduct

- Repeated *Level I/Level II* Offenses
  - Destruction of Property over \$500
  - Fighting
  - Assault
  - Gambling
  - Bullying
- Threat to a PGCPs Employee
  - Reckless Endangerment
  - Group Fight
    - Attack on a PGCPs employee (including an employee intervening in a student fight)
    - Serious Bullying (Persistent or Long-Term)
    - Hazing
    - Sexual Misconduct
    - Theft of \$500 or more
    - Threat towards PGCPs employee

Repeated Level III Misbehavior may result in a more serious consequence, such as a request for a long-term suspension, or as a Level IV or V Offense



## LEVEL IV LONG-TERM SUSPENSION 6-10 DAYS EXTENDED SUSPENSION 11-45 DAYS



### Suspension Conduct

- Distribution of Alcohol
- Attack resulting in serious bodily injury
- Attack on PGCPs employee
- Distribution of illegal drugs
- Fighting resulting in serious bodily injury
- Group fight resulting in serious bodily injury
- Possession or use of explosives
- Possession of an inoperable firearm
- Sexual Attack
- Extortion

### Disciplinary Options

- Student will be placed on suspension while the Principal submits a request for Extended Suspension.
- Referral to alternative placement as available and appropriate.

# LEVEL V

## EXPULSION

### **Expulsion Conduct**

- Repeated or severe Level III and IV violations.
- Possessing Firearm(s)

### **Disciplinary Options**

- Expulsion
- Alternative Education Program



THE END

Let's work together to have a  
great school year!

